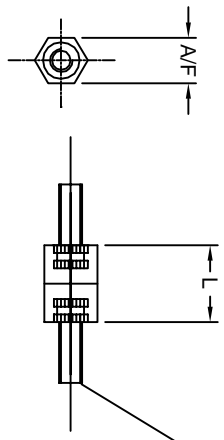


MS Zink Plated Screw M3x8mm
 (M3X6MM & M3X10MM ARE ALSO AVAILABLE)

AVAILABLE SIZES



A/F	L	THREADING	PART CODE
6	10	M3	AEHS6310SS
6	12	M3	AEHS6312SS
6	13	M3	AEHS6313SS
6	15	M3	AEHS6315SS
6	17	M3	AEHS6317SS
6	20	M3	AEHS6320SS
6	25	M3	AEHS6325SS
6	30	M3	AEHS6330SS
6	40	M3	AEHS6340SS

ANAND Enterprises		TOLERANCE UNLESS OTHERWISE STATED		±0.2
HEAT TREATMENT		N/A		ANGLE +0.10°
MATERIAL		NYLON 6 BLACK		UNIT MM
TITLE		DATE		QTY.
HEX SPACERS		17.8.2011		
MOLDED WITH INSERTS		DRG. NO.		117
		SCALE 1:1		SHEET 1 OF 1