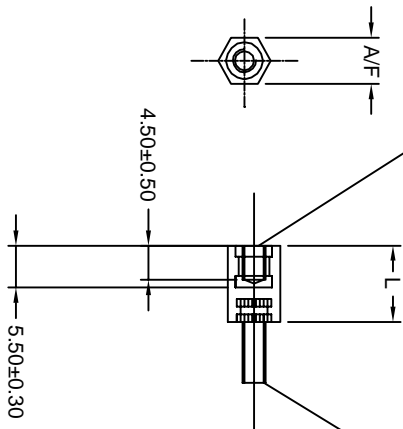


Brass Insert With M3 Tapping



MS Zink Plated Screw M3x8mm
(M3X6MM & M3X10MM ARE ALSO AVAILABLE)

AVAILABLE SIZES

A/F	L	THREADING	PART CODE
6	10	M3	AEHS6310NS
6	12	M3	AEHS6312NS

ANAND Enterprises		TOLERANCE UNLESS OTHERWISE STATED		±0.2
HEAT TREATMENT	N/A			ANGLE +0°10'
MATERIAL	NYLON 6 BLACK	DATE	17.8.2011	UNIT MM
TITLE HEX SPACERS MOLDED WITH INSERTS		DRG. NO.	026	QTY.
		SCALE 1:1	SHEET 1 OF 1	